



Camcorder / SLR Sensor

Camera Holder Wide

About Octopus

Shopguard had been known mainly as a manufacturer of EAS systems based on RF technology. In recent years however we have also introduced top-of-the-line retail security products such as the Octopus loop alarm system. This State-of-the-Art loop alarm system has been a worldwide success lately with the largest Electronics retailers from Europe through North America.

Octopus sensors are ingeniously designed, durable and professional high quality security sensor with integrated charging capability, sensors are of smallest size enabling almost invisible protection.

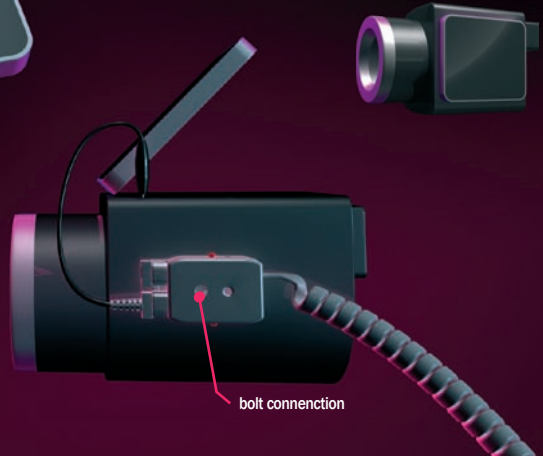
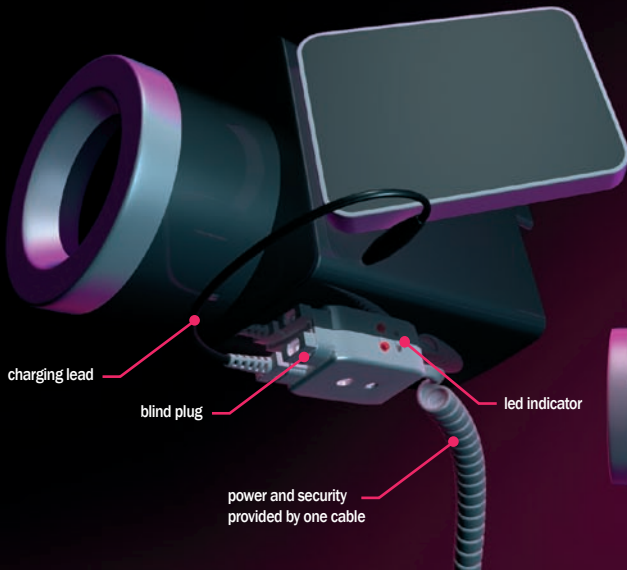
shopguard octopus

+ shopguard

Shopguard Systems Limited and its international partner companies have been present on the international EAS market for the past sixteen years, manufacturing, selling, installing and maintaining such systems. Please visit our official site for further information: www.shopguard.com

Camcorder / SLR Sensor

Camera Holder **Wide**



+ Mini sensor



Easy to use secondary sensor, which can be connected modularly to any of our Main sensors. Ideal to protect the battery housing of mobile phones or lenses of SLR cameras. Integrating the Mini with the Main sensor means double protection!

+ Blind plug



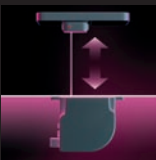
Part of the modular system. **MUST** be plugged into the main sensor if no secondary sensor is used.

+ Charging lead



Individual Charging Leads are available for a wide variety of digital cameras and camcorders. Power and security provided by one cable!

+ Recoiler



A high quality, long life Retractor with 1 m pull-out cable length and integrated charging capability. Easy to mount with double sided tape or screws. Available with specific sensors for mobile phones, PDA-s, PNA-s, GPS-s, cameras and camcorders.

+ Integrated bolt and opener



Bolt mount sensor: a special bolt is used for securing the sensor to the camera's tripod hole. Integrated bolt functions as mechanical and electrical connection. Special Allan-like pentagonal screwdriver key: bolt can be opened with the supplied special key only.

+ features

- + Ingeniously designed, durable, professional high quality security sensor.
- + Strong magnets imbedded in the sensor hold sensor&product stable and secure in their magnetic cradle.
- + Double security: secondary protection available as a MINI sensor, protecting the lens of an SLR.
- + Individual charging leads available for a wide variety of digital cameras and camcorders. Power and security provided by one cable!
- + Modularity: sensor can be upgraded by a charging lead or secondary sensor anytime!
- + Extra bright double LED-s ease alarm recognition.
- + Bolt mount sensor: a special bolt is used for securing the sensor to the camera's tripod hole.
- + Integrated bolt functions as mechanical and electrical connection.
- + Special Allan-like pentagonal screwdriver key: bolt can be opened with the supplied special key only.

shopguard octopus

+ shopguard

Shopguard Systems Limited and its international partner companies have been present on the international EAS market for the past sixteen years, manufacturing, selling, installing and maintaining such systems. Please visit our official site for further information: www.shopguard.com